

Type 52-00 Base Plate

52-00安装基板

Important Features

- Capacity range: 20 kg to 10 000 kg.
- Very easy to install.

Options

- Lateral load cell locking system for SB4 and SB5.
- Overload protection system.

材料：合金钢、镀锌或不锈钢

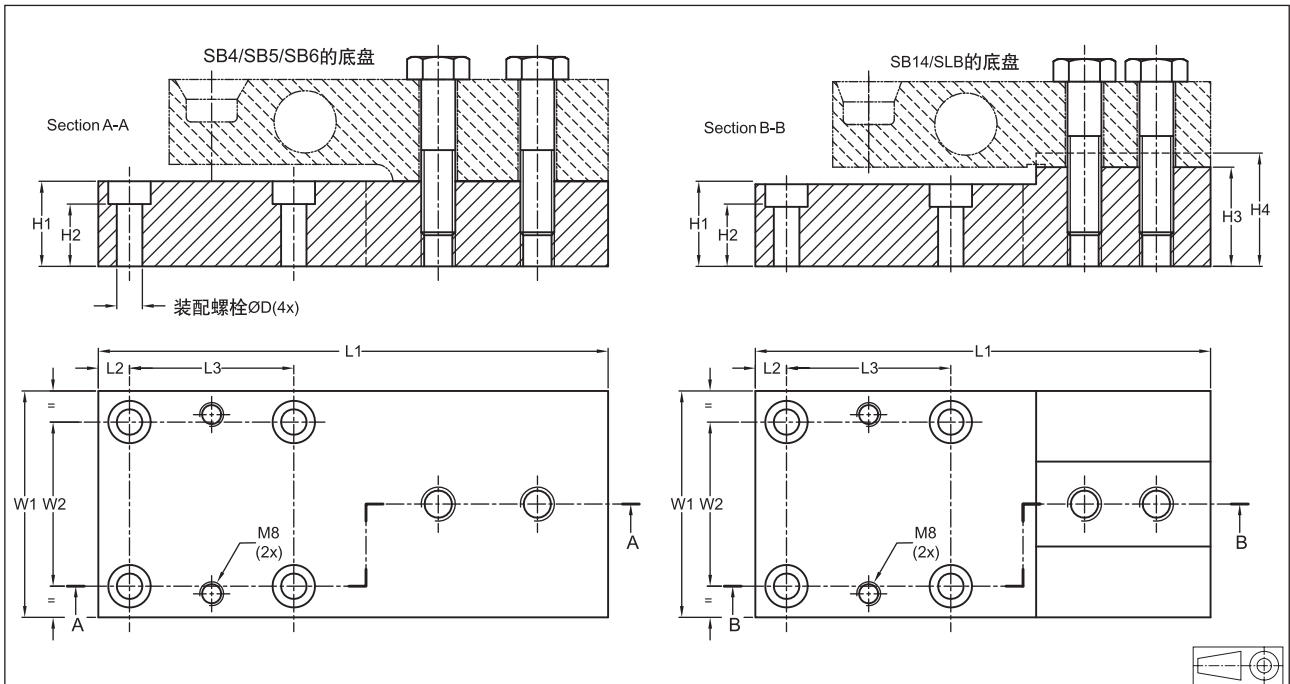
主要特点

- 量程：20kg到10000kg
- 易安装

选项

- SB4和SB5的固定装置
- 过载保护系统

Dimensions 尺寸

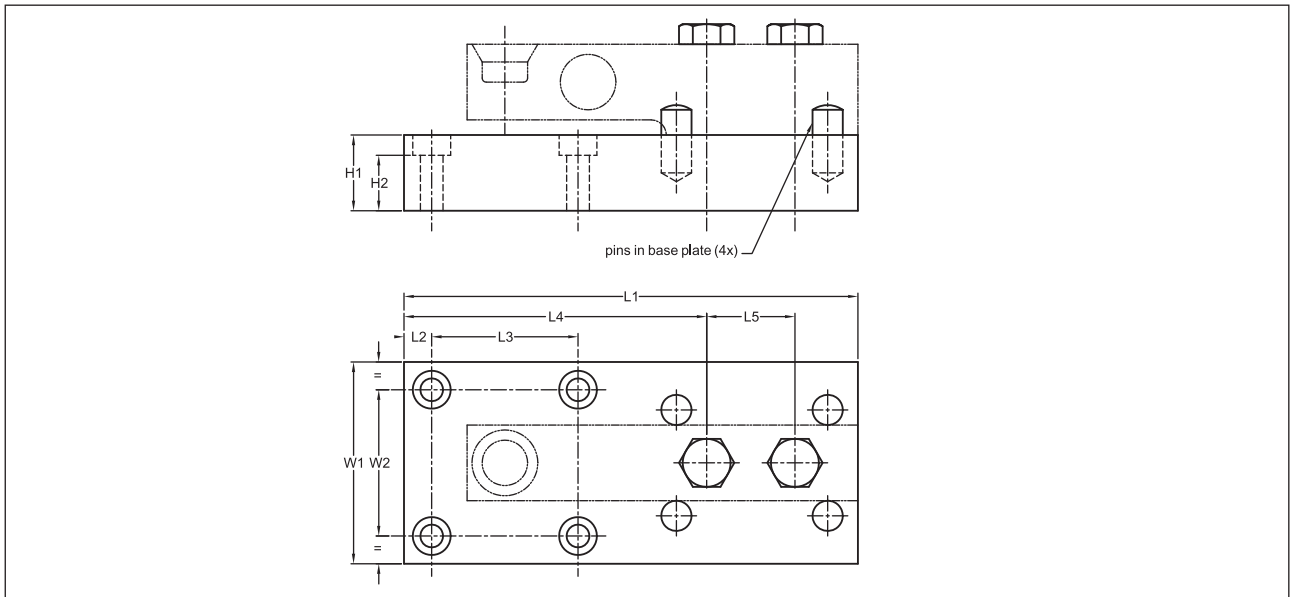


LoadCellType 型号	量程(kg)	L1	L2	L3	H1	H2	H3	H4	W1	W2	D	装配螺栓
SB6-200N/500 N/1 kN/2 kN*	20,4/51/102/204	150	8	44	15	8	n.a.	n.a.	60	44	7	M6
SB4/SB5-5kN/10 kN/20 kN	510/1020/2039	180	11	58	30	21	n.a.	n.a.	80	58	9	M8
SB4/SB5-50kN	5099	220	12	76	40	29	n.a.	n.a.	100	76	11	M10
SB4/SB5-100kN	10197	275	15	90	60	47	n.a.	n.a.	120	90	14,5	M12
SB14-500lb/1 klb/2.5 klb/5 klb	227/454/1134/2268	164	11	58	29	20	35	40	80	58	9	M8
SLB-200lb/500 lb/1 klb/2.5 klb/5 klb	91/227/454/1134/2268											

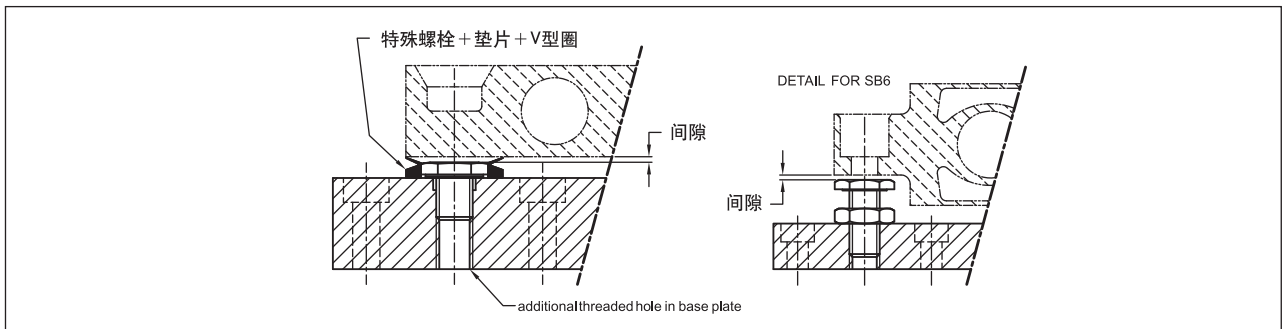
To be mounted including spacer (height 15 mm). 装置包括隔流设备 (高度15mm)

All dimensions in mm. 所有尺寸单位为mm。

Options 选项



Load cell locking system for SB4/SB5 (option) SB4/SB5 传感器的固定装置



Overload protection system (option) 过载保护系统 (可选)

Load cell deflection 传感器最大变量

SB6 称重传感器	变量	间距为 "x" **	SB4/SB5 称重传感器	变量	间距 "x" **	SLB 称重传感器	变量	间距为 "x" **	SB4 称重传感器	变量	间距 "x" **
200 N	0.21 mm	0.25 mm	5 kN	0.21 mm	0.25 mm	200 lb	0.27 mm	0.35 mm	500 lb	0.21 mm	0.30 mm
500 N	0.30 mm	0.40 mm	10 kN	0.29 mm	0.35 mm	500 lb	0.24 mm	0.30 mm	1 klb	0.24 mm	0.30 mm
1kN	0.26 mm	0.35 mm	20kN	0.49 mm	0.60 mm	1klb	0.25 mm	0.30 mm	2.5klb	0.32 mm	0.40 mm
2kN	0.36mm	0.45mm	50kN	0.52mm	0.65mm	2.5klb	0.33mm	0.40mm	5klb	0.47mm	0.60mm
			100 kN	0.74 mm	0.95 mm	5 klb	0.56 mm	0.70 mm	10 klb		

Remarks:注

* Deflection is defined as the sum of load cell deflection and base plate bending.

称重传感器形变和基盘的形变。

** Settings for utilization to Maximum Capacity of the load cell. If utilization of load cell is lower, the setting value could be reduced in proportion to the load. 形变量取决于称重传感器应用的最大量程。