

Type KPK-4 Junction Box, Polyester

KPK-4接线盒



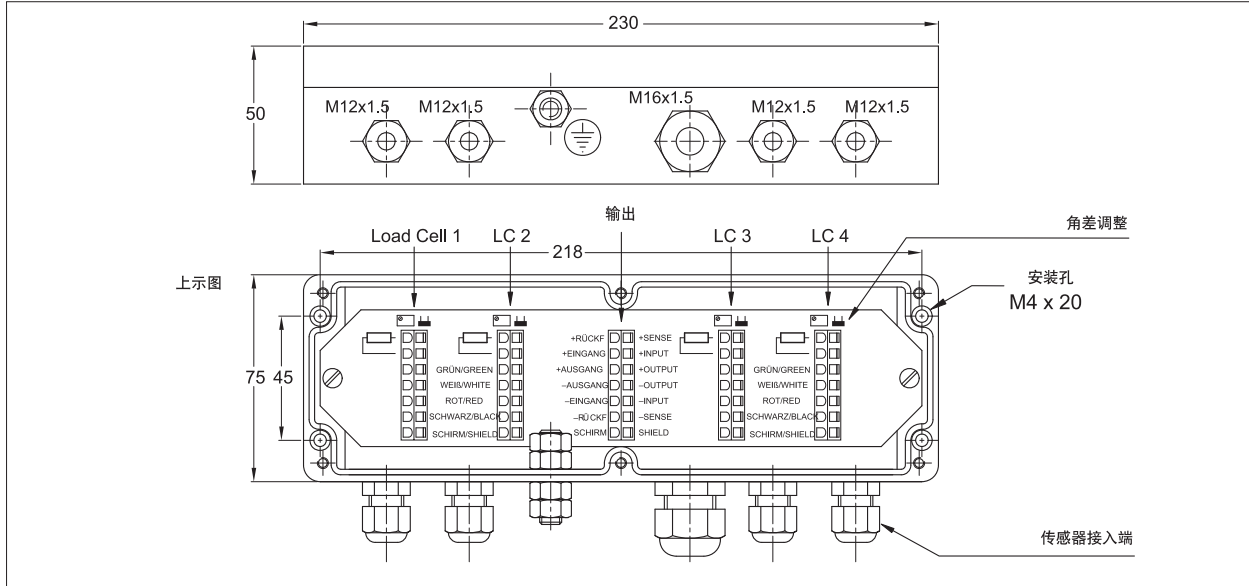
Important Features

- Connection for 3 or 4 load cells.
- Rugged polyester industrial box.
- Protection IP 66.

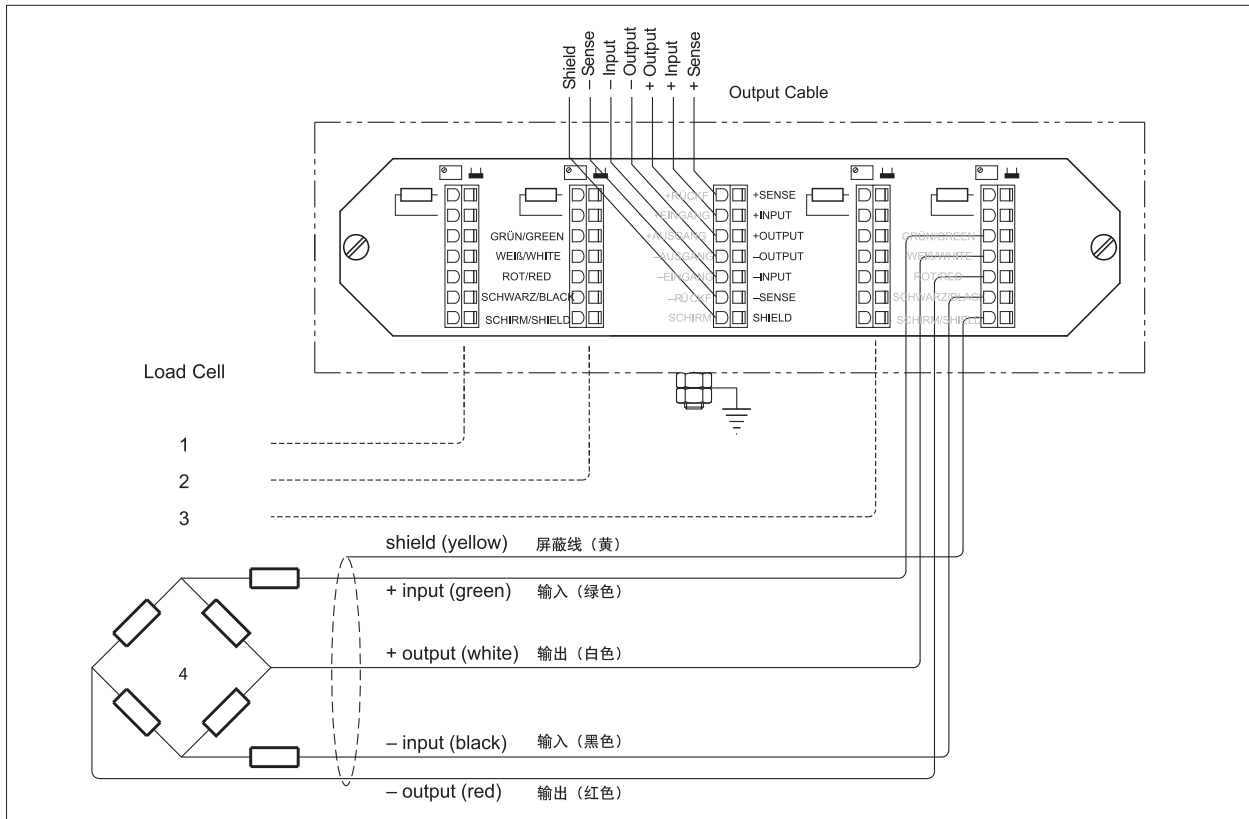
主要特点

- 连接3个或4个传感器
- 聚脂外壳
- 防护等级IP66

Dimensions 尺寸



Wiring 连线



Note: 注意

*Cable gland M12x1.5 for cable diameter 3...6.5 mm. 对于直径为3...6.5mm的电缆应使用M12 x1.5的电缆腺

*Cable gland M16x1.5 for cable diameter 5...10 mm. 对于直径为5...10mm的电缆应使用M16x1.5的电缆腺