

**Excerpt from FM Approval Guide of May, 2002.****Flintec Inc, 18A Kane Industrial Dr, Hudson MA 01749**

*SB4-a, SB5-a, SB6-b, SB7-b, PC1-b, RC1-d, PBX-e, SLB-f, SB14-a, SB15-a, PC6-b, RC2-d, PC2-g, RC3-d, ZLB-b, HM1-g, PC3-b, BK2, DSB2, DSB5, CPB-e. Load Cell.*

*UB1-a, UB5-a, UB6-b, UB7-b, ULB-a. Force Transducer.*

IS / I,II,III / ABCDEFG / T4 — 3-21457 / 4; Entity

Entity Parameters:

V Max = 29.9 V dc, I Max = 450 mA, C i = 0 F, L i = 0 mH.

- a = Capacity 100 kg or 10 ton; 200 lb or 20 klb; 1 kN or 100 kN.
- b = Capacity 5 kg or 500 kg; 10 lb or 1 klb; 50 N or 5 kN.
- d = Capacity 20 klb or 500 klb; 10 ton or 250 ton; 100 kN or 2.5 MN.
- e = Capacity 0.5 kg or 2500 klb; 1 lb or 5 klb; 1 kN or 100 kN.
- f = Capacity 200 lb or 20 klb; 100 kg or 10000 kg; 1 kN or 100 kN.
- g = Capacity 50 kg or 1000 kg; 100 lb or 2000 lb; 500 N or 10 kN.

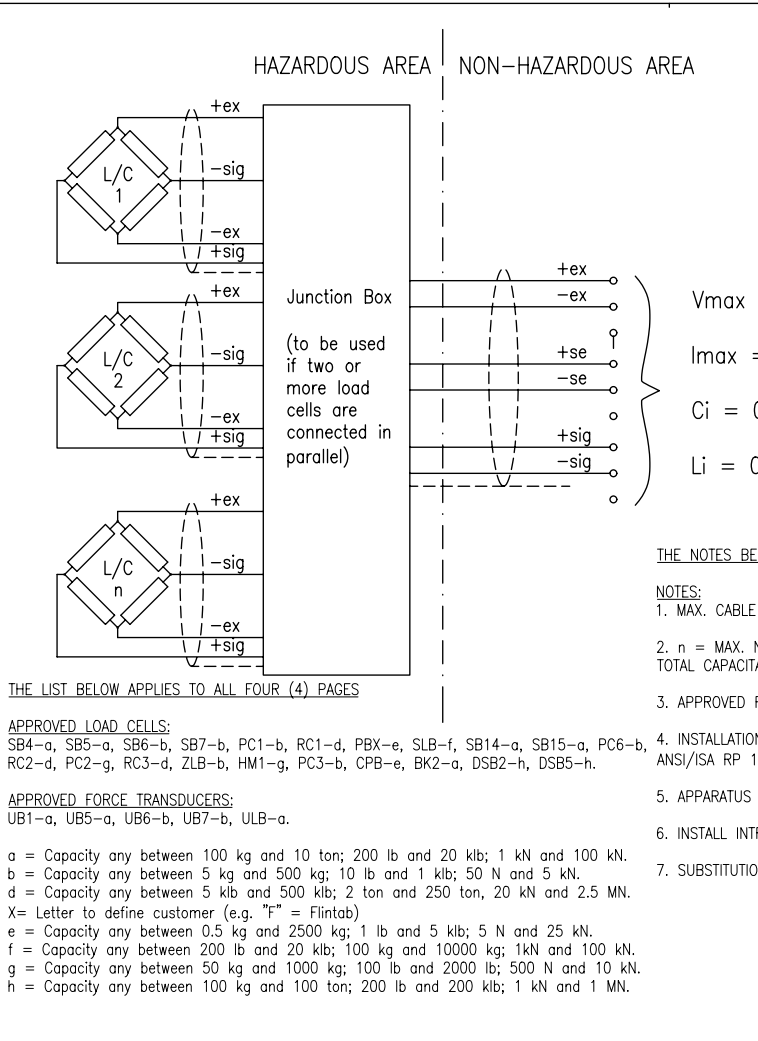
Control Drawings 3-21457 attached (4 drawings)

This document must not be copied without our written permission, and the content thereof must not be imparted to a third party nor be used for any unauthorized purpose. Contravention will be prosecuted.

inch (millimeter)  
 1/16 (1.5748) 1/8 (3.1496) 3/16 (4.7143) 1/4 (6.2791) 5/16 (7.8439) 3/8 (9.4088) 7/16 (10.9736) 1/2 (12.5284) 5/8 (15.875) 3/4 (19.0476) 7/8 (22.2262) 1 (25.4)

DEC x or Fract. TOL ±0.015(0.4) Break Corners 0.010(0.25) Max. DEC xx TOL ±0.010(0.25) Angular TOL ±1/2 DEC xxx TOL ±0.005(0.12) Mach. Finish 125

Unless otherwise specified



Rev.	Date	Sign/Approv	Description	Rev.	Date	Sign/Approv	Description
1	5/17/96	RPH	PBX-g series added. Only page 1 affected.	2	1/17/97	RPH	SLB, SB14, SB15, PC6, PC2 added. Capacities consolidated.
3	3/11/99	RPH	RC-3, ZLB, HM1, PC3, CPB, ULB added.	4	7/13/00	RPH	BK2, DSB2, DSB5 added. "a" range expanded.

$V_{max} = 29.9 \text{ V.}$   
 $I_{max} = 0.450 \text{ A.}$   
 $C_i = 0.$   
 $L_i = 0.$

THE NOTES BELOW APPLY TO ALL FOUR (4) PAGES

NOTES:

- MAX. CABLE LENGTH = 100 FT.
- n = MAX. NUMBER OF LOAD CELLS THAT CAN BE CONNECTED IN PARALLEL WITHOUT EXCEEDING MAX. TOTAL CAPACITANCE AND MAX. TOTAL INDUCTANCE.
- APPROVED FOR CLASS I, II AND III, DIVISION 1, GROUPS A, B, C, D, E, F AND G HAZARDOUS LOCATIONS.
- INSTALLATION TO BE IN ACCORDANCE WITH THE NATIONAL ELECTRICAL CODE, NFPA 70, ARTICLE 504, AND ANSI/ISA RP 12.6.
- APPARATUS CONNECTED TO THE SYSTEM SHALL NOT USE OR GENERATE VOLTAGE GREATER THAN 250 V.
- INSTALL INTRINSIC SAFE BARRIERS IN ACCORDANCE WITH BARRIER INSTRUCTIONS.
- SUBSTITUTION OF COMPONENTS MAY VOID FACTORY MUTUAL APPROVAL.

THE LIST BELOW APPLIES TO ALL FOUR (4) PAGES

APPROVED LOAD CELLS:

SB4-a, SB5-a, SB6-b, SB7-b, PC1-b, RC1-d, PBX-e, SLB-f, SB14-a, SB15-a, PC6-b, RC2-d, PC2-g, RC3-d, ZLB-b, HM1-g, PC3-b, CPB-e, BK2-a, DSB2-h, DSB5-h.

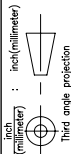
APPROVED FORCE TRANSDUCERS:

UB1-a, UB5-a, UB6-b, UB7-b, ULB-a.

- a = Capacity any between 100 kg and 10 ton; 200 lb and 20 klb; 1 kN and 100 kN.
- b = Capacity any between 5 kg and 500 kg; 10 lb and 1 klb; 50 N and 5 kN.
- d = Capacity any between 5 klb and 500 klb; 2 ton and 250 ton, 20 kN and 2.5 MN.
- X = Letter to define customer (e.g. "F" = Flintab)
- e = Capacity any between 0.5 kg and 2500 kg; 1 lb and 5 klb; 5 N and 25 kN.
- f = Capacity any between 200 lb and 20 klb; 100 kg and 10000 kg; 1kN and 100 kN.
- g = Capacity any between 50 kg and 1000 kg; 100 lb and 2000 lb; 500 N and 10 kN.
- h = Capacity any between 100 kg and 100 ton; 200 lb and 200 klb; 1 kN and 1 MN.

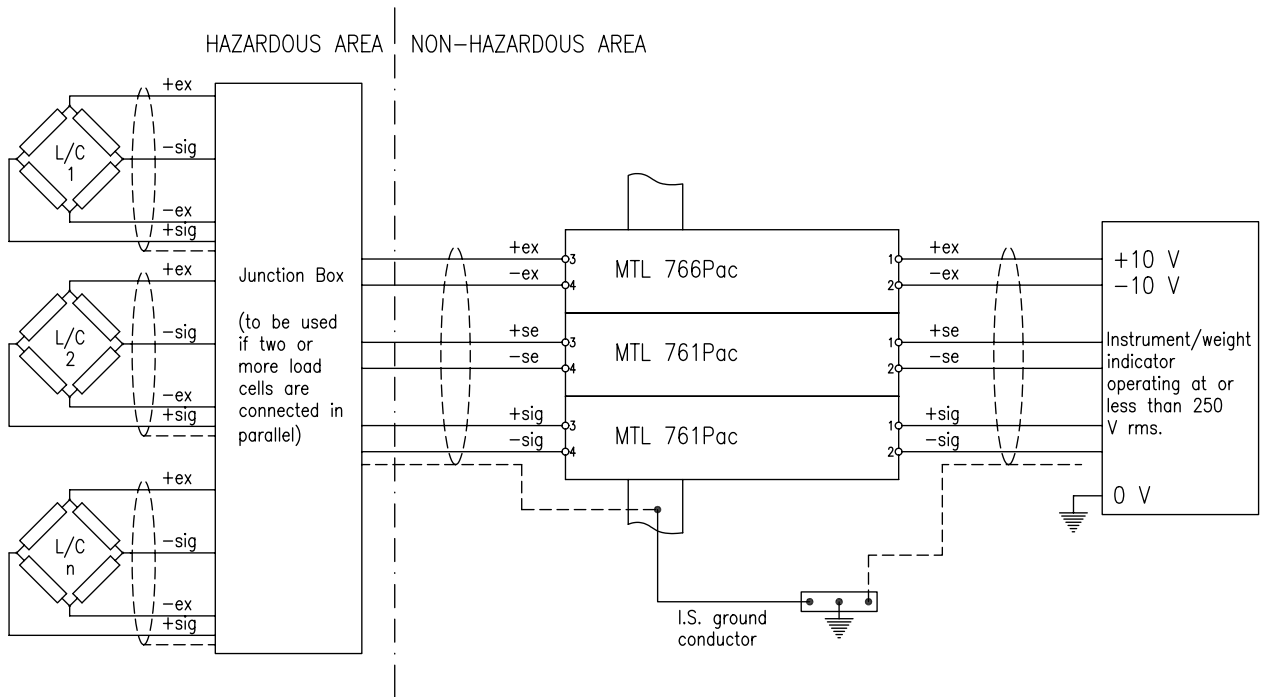
Qty	Group	Item No.	Name	Drwng No./Material	Remarks	
	D	C	B	A	RPH/RPH	Checked Date 12/10/95
GENERAL CONTROL DRAWING					FLINTEC	
ENTITY MODE					HUDSON, MA 01749, USA	
					Drawing No. 3-214574	
					Rev. No. 4	
					Sheet 1 of 4	

This document must not be copied without our written permission, and the content thereof must not be imparted to a third party nor be used for any unauthorized purpose. Contravention will be prosecuted.



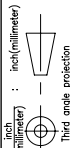
Unless otherwise specified  
 DEC x or Fract. TOL.  $\pm 0.015(0.4)$  Break Corners  $0.010(0.25)$  Max.  
 DEC xx TOL.  $\pm 0.010(0.25)$  Angular TOL.  $\pm 1/2$   
 DEC xxx TOL.  $\pm 0.005(0.12)$  Mach. Finish 125

Rev.	Date	Sign/Appro	Description	Rev.	Date	Sign/Appro	Description
1	5/17/96	RPH	PBX-g series added. Only page 1 affected.	2	1/17/97	RPH	SB, SB14, SB15, PV6, W2, PC2 added. Capacitors consolidated.
3	3/11/99	RPH	RC-3, ZLB, HM1, PC3, CPB, ULB added.	4	7/13/00	RPH	BK2, DSB2, DSB5 added. "d" range expanded.



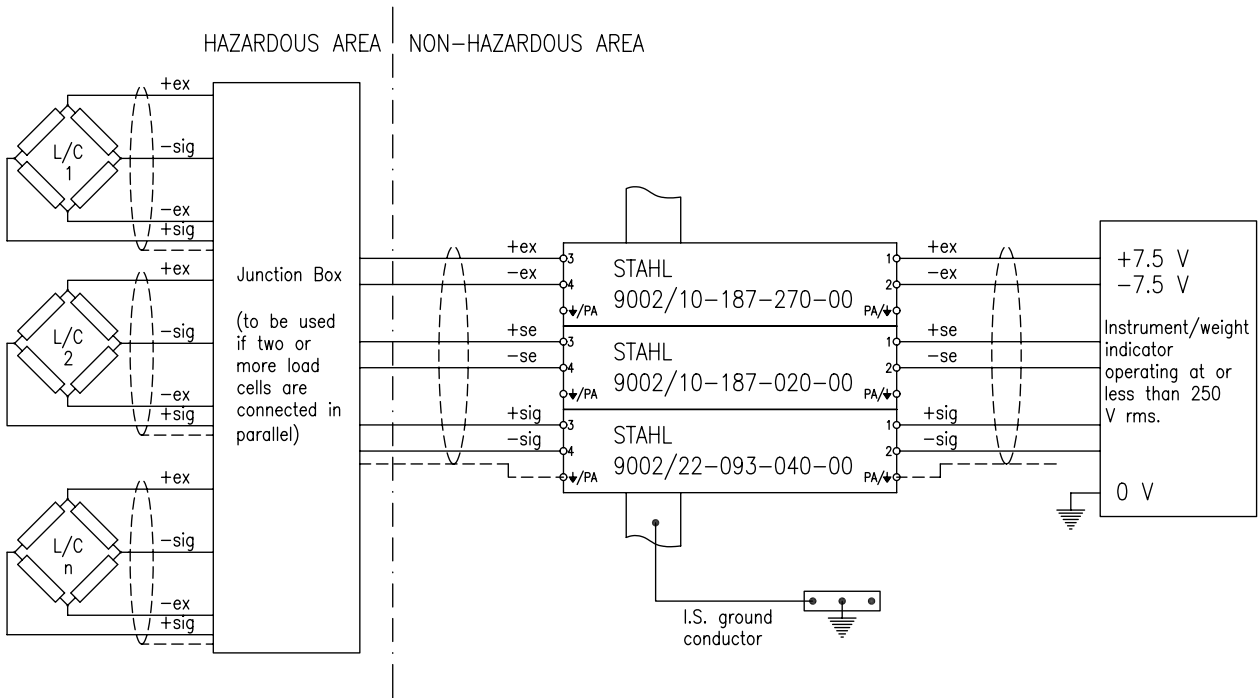
Qty	Group	Item No.	Name	Drwg No./Material	Remarks
	D	C	B	A	RPH/RPH
			Checked Date	Scale	Part List
			3/21/95	NONE	Assembly
CONTROL DRAWING					<b>FLINTAB</b> HUDSON, MA 01749, USA Drawing No. 3-214574 Reg. No. Sheet 2 of 4
MTL BARRIERS					

This document must not be copied without our written permission, and the content thereof must not be imparted to a third party nor be used for any unauthorized purpose. Contravention will be prosecuted.



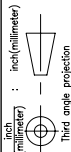
Unless otherwise specified  
 DEC x or Fract. TOL.  $\pm 0.015(0.4)$  | Break Corners 0.010(0.25) Max.  
 DEC xx TOL.  $\pm 0.010(0.25)$  | Angular TOL.  $\pm 1/2$   
 DEC xxx TOL.  $\pm 0.005(0.12)$  | Mach. Finish 125

Rev.	Date	Sign/Appr	Description	Rev.	Date	Sign/Appr	Description
1	5/17/96	RPH	PBX-g series added. Only page 1 affected.	2	1/17/97	RPH	SB, SB14, SB15, P06, P02, P03 added. Capacities consolidated.
3	3/11/99	RPH	RC-3, ZLB, HM1, PC3, CPB, ULB added.	4	7/13/00	RPH	BK2, DSB2, DSB5 added. "d" range expanded.



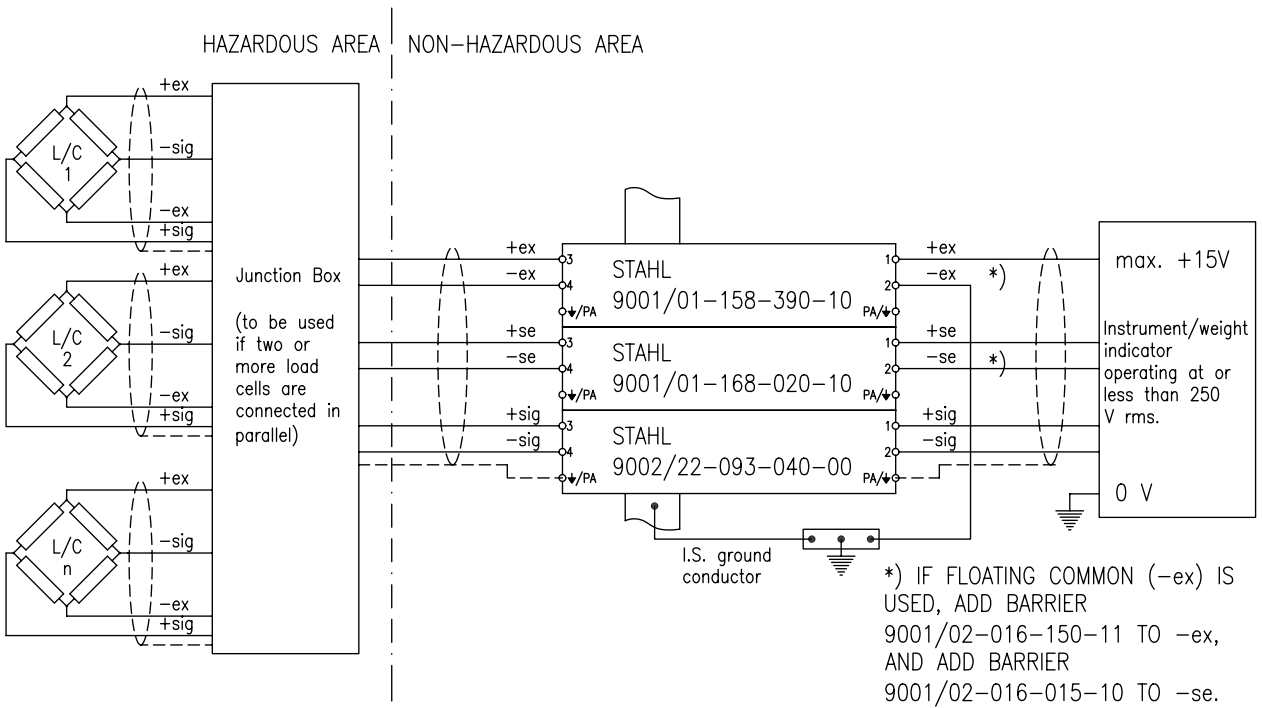
Qty	Group	Item No.	Name	Drwg. No./Material	Remarks
	D	C	B	A	RPH/RPH
			Checked Date	Scale	Part List
			3/21/95	NONE	Assembly
CONTROL DRAWING - STAHL WITH SYMMETRIC EXCITATION					FLINTEC
					HUDSON, MA 01749, USA
					Drawing No. 3-214574
					Rev. No. 4
					Sheet 3 of 4

This document must not be copied without our written permission, and the content thereof must not be imparted to a third party nor be used for any unauthorized purpose. Contravention will be prosecuted.



Unless otherwise specified  
 DEC x or Fract. TOL.  $\pm 0.015(0.4)$  Break Corners  $0.010(0.25)$  Max.  
 DEC xx TOL.  $\pm 0.010(0.25)$  Angular TOL.  $\pm 1/2$   
 DEC xxx TOL.  $\pm 0.005(0.12)$  Mach. Finish 125

Rev.	Date	Sign/Approv	Description	Rev.	Date	Sign/Approv	Description
1	5/17/96	RPH	PBX-g series added. Only page 1 affected.	2	11/17/97	RPH	SIB, SIB4, SIB5, P06, P02, P02 added. Capacities consolidated.
3	3/11/99	RPH	RC-3, ZLB, HM1, PC3, CPB, ULB added.	4	17/13/00	RPH	BK2, DSB2, DSB5 added. "d" range expanded.



\*) IF FLOATING COMMON (-ex) IS USED, ADD BARRIER  
 9001/02-016-150-11 TO -ex,  
 AND ADD BARRIER  
 9001/02-016-015-10 TO -se.

Qty	Group	Item No.	Name	Drwg No./Material	Remarks
	D	C	B	A	RPH/RPH
			Checked Date	3/21/95	Scale NONE
CONTROL DRAWING - STAHL WITH SINGLE SIDED SUPPLY					Parts list Assembly Circuit Diagram Reg. No.
					Drawing No. HUDSON, MA 01749, USA 3-214574 Sheet 4 of 4